



Turning with / without milling
CNC Lathe

NT
Series

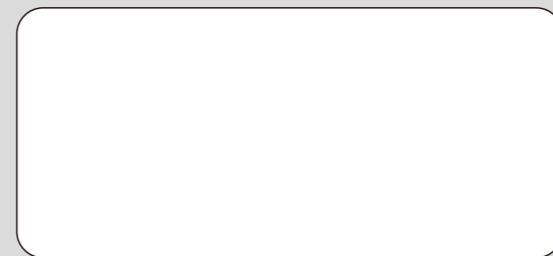


Campro Precision Machinery Co., Ltd.

No. 12, Jingke 1st Rd., Nantun, Taichung
40852, Taiwan

TEL: +886-4-23500501 FAX: +886-4-23500213

E-mail: sales@campro.com.tw



QAC11-01



• Machine specifications and design are subject to change without prior notice due to on-going innovation.

2019-5-V1.0 8P GH500

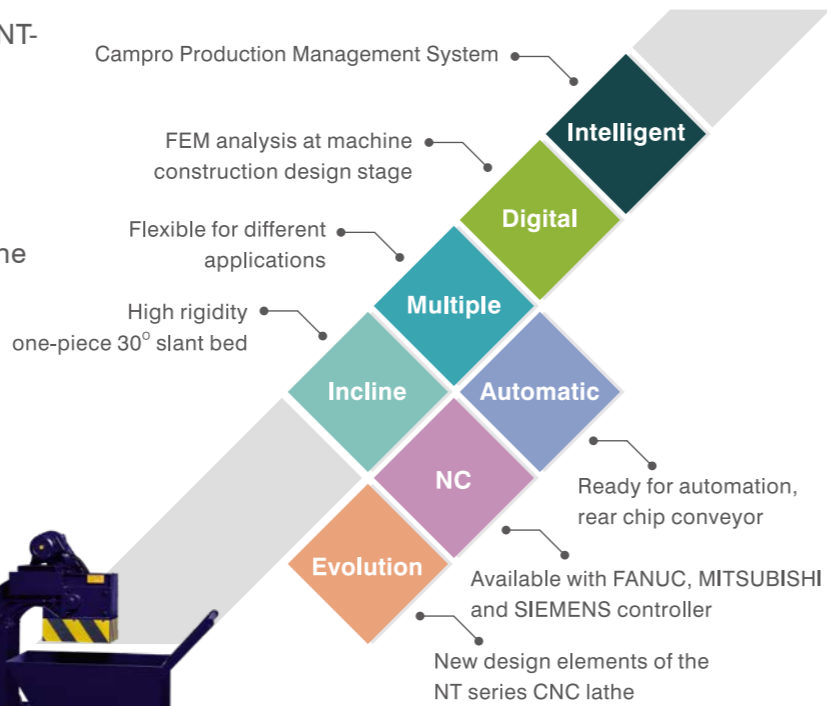


Campro Precision Machinery Co., Ltd.

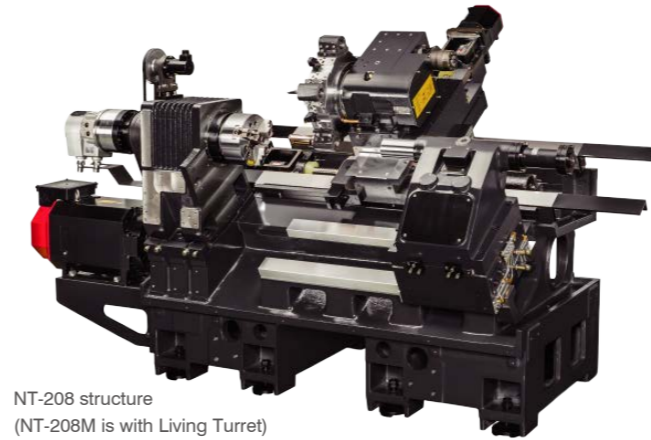
www.campro.com.tw

Line Up

Campro presents the new NT series CNC lathe. NT-208 is based on high quality cast iron for perfect stiffness and vibration characteristics. 30° cast iron inclined bed ensure quick chip evacuation. Wide range of options allows customer to equip linear / box guideways, sub spindle or Y-axis in the same floor space for any production demand.



NT-208 / NT-208M

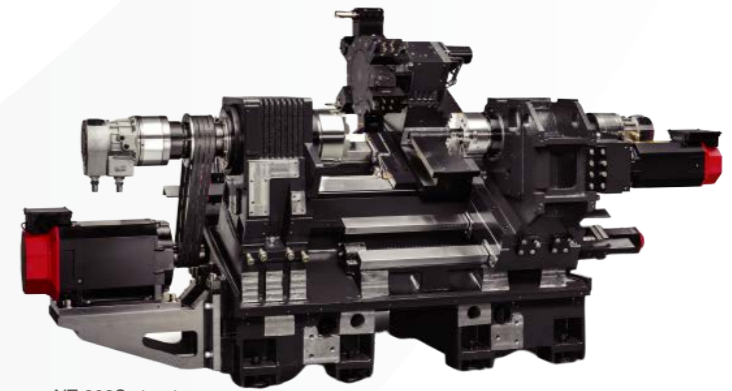


NT-208 structure (NT-208M is with Living Turret)

30° cast iron inclined bed design offers perfect stiffness and lower vibration to deliver much heavier cutting with a smaller footprint. Hardened precision box guideways provides excellent performance for heavy-duty cutting. NT-208M equip with C-axis to achieve versatility and productivity, and Living Turret replaces which each tool / station can become a rotating tool.

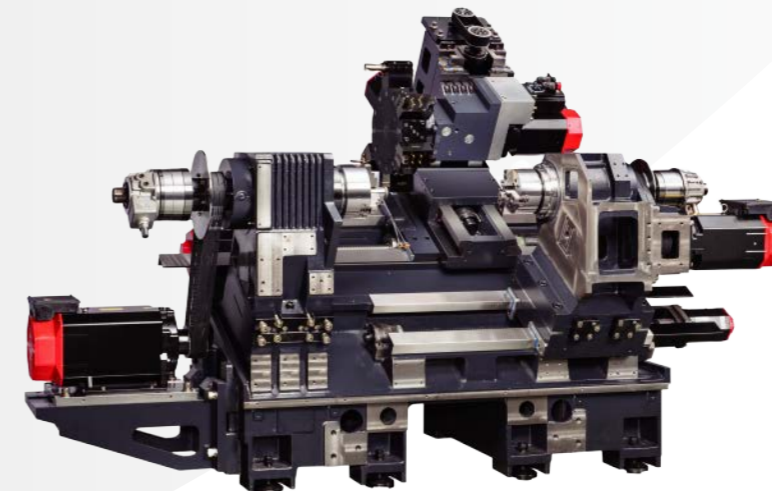
The NT-208S is Campro's highly flexible and profitable twin spindle CNC lathe. Through synchronized control of 8" Main spindle (Optional 10") / 6" Sub-spindle (Optional 8") to complete the greatest amount of primary and secondary turning possible in one compact platform. The NT-208SM not only equip twin spindle but also adopt living turret and C-axis control which enables machine to perform milling functions.

NT-208S / NT-208SM



NT-208S structure (NT-208SM is with Living Turret)

NT-208SY

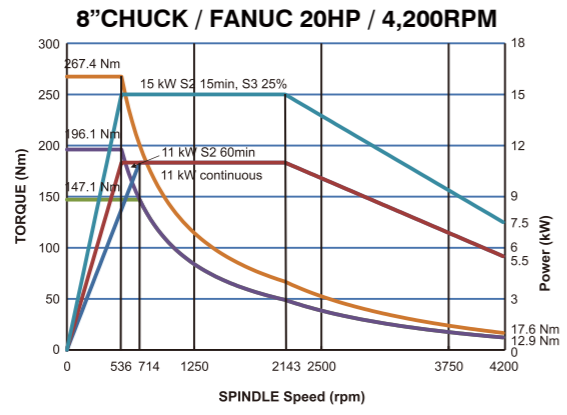


NT-208SY structure

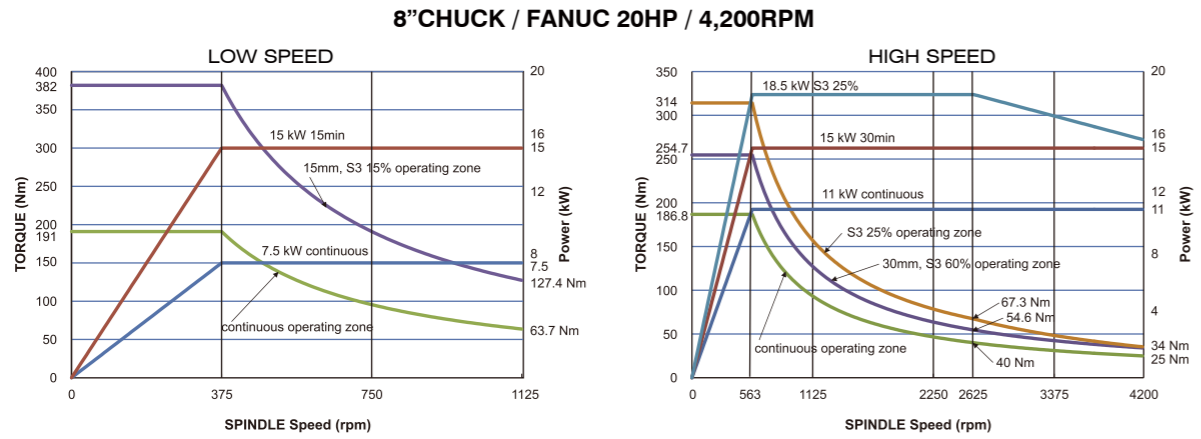
The Y-axis on NT-208SY designed with BMT Living Turret and Sub-spindle performs multiple tasks on a workpiece and decreases inaccuracy from machining and arithmetic error. Real Y-axis allows to make servo compensation, performs excellent positioning accuracy. The front and back-end turning / milling applications could be completed in a single set-up to finish the complexity machining work.

Spindle Diagram

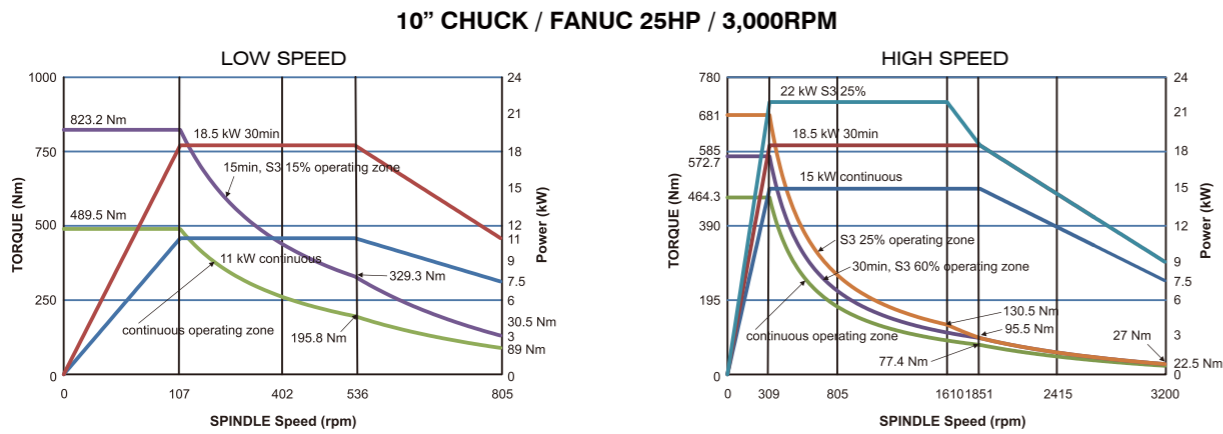
NT-208



NT-208S/ NT-208SM/NT-208SY

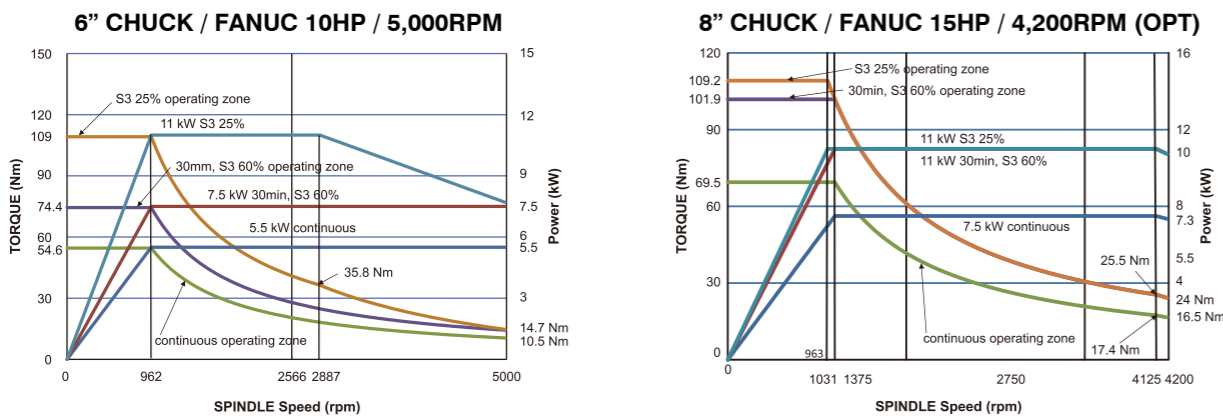


NT-208S/ NT-208SM (OPT)



Sub-spindle Diagram

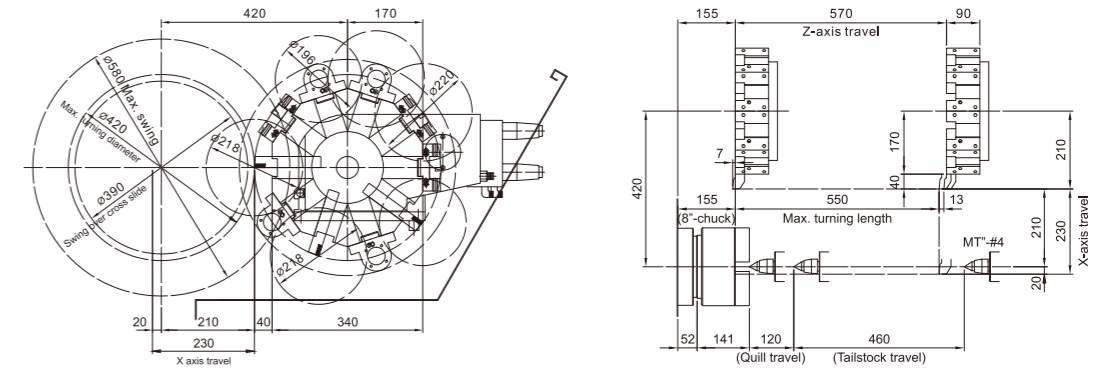
(NT-208S / NT-208SM / NT-208SY)



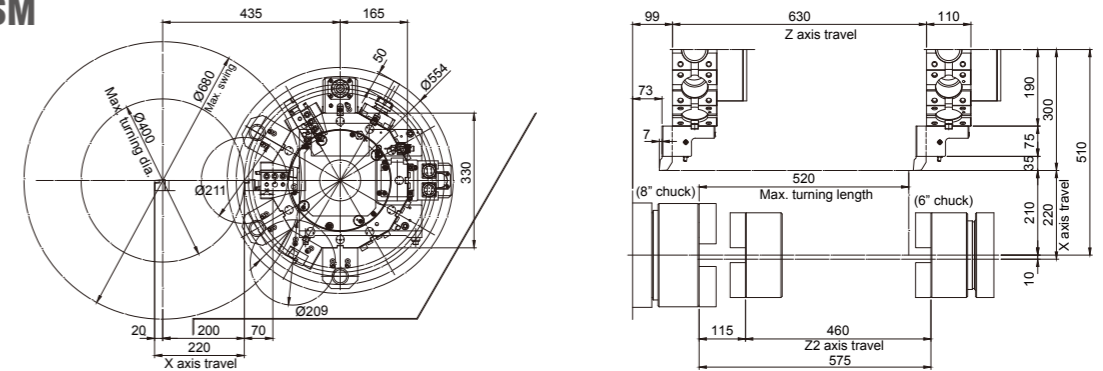
Working Area

Unit: mm

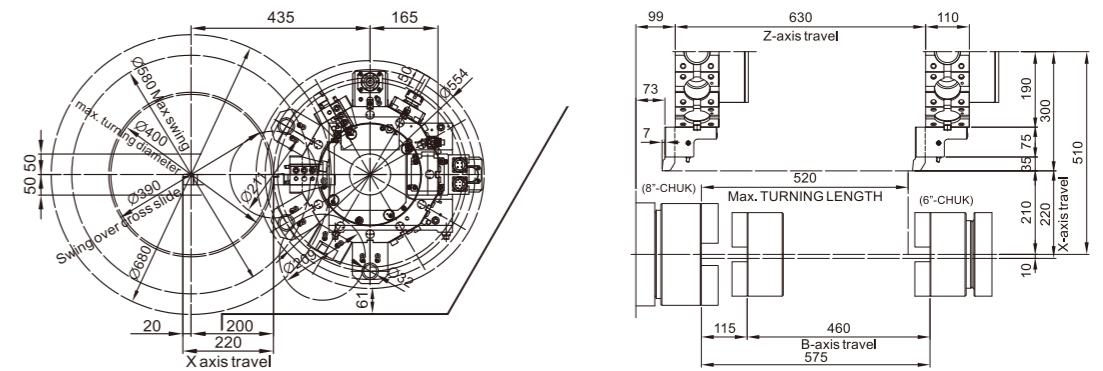
NT-208



NT-208S/ NT-208SM

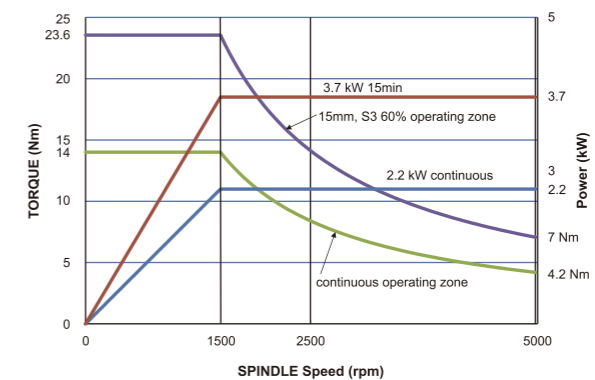


NT-208SY



Living Turret Diagram

(NT-208M / NT-208SM / NT-208SY)



Machine Specification

Model	Unit	NT-208	NT-208S	NT-208M	NT-208SM	NT-208SY
WORKING AREA						
Max. swing over bed	mm (in)	Ø580 (22.8")	Ø660 (28.5")	Ø580 (22.8")	Ø660 (28.5")	Ø680 (26.7")
Max. swing over carriage	mm (in)	Ø390 (15.3")	Ø460 (18.1")	Ø390 (15.3")	Ø460 (18.1")	Ø460 (18.1")
Max. turning length	mm (in)	550 (21.6")	520 (24.4")	550 (21.6")	520 (24.4")	520 (20.4")
Max. turning diameter	mm (in)	Ø420 (16.5")	Ø420 (16.5")	Ø420 (16.5")	Ø420 (16.5")	Ø400 (15.7")
TRAVEL						
X-axis travel	mm (in)	210+20 (8.2" + 0.7")	210+20 (8.2" + 0.7")	210+20 (8.2" + 0.7")	210+20 (8.2" + 0.7")	200+20 (7.8" + 0.7")
Z-axis travel	mm (in)	570 (22.4")	630 (24.8")	570 (22.4")	630 (24.8")	630 (24.8")
Y-axis travel	mm (in)	—	—	—	—	100 (±50) 3.9" (±1.9")
Rapid traverse (X/Z) / (Y)	m (in) / min.	(20 / 24) / — (787.4 / 944.8) / —	(24 / 24) / — (944.8 / 944.8) / —	(20 / 24) / — (787.4 / 944.8) / —	(24 / 24) / — (944.8 / 944.8) / —	(20 / 24) / (10) (787.4 / 944.8) / (393.7)
SPINDLE						
Spindle nose	type	A2-6	A2-6	A2-6	A2-6	A2-6
Hydraulic Chuck	inch	8	8	8	8	8
Hole through draw tube	mm (in)	Ø52 (2")	Ø52 (2")	Ø52 (2")	Ø52 (2")	Ø52 (2")
Spindle motor	kW (HP)	11 / 15 (20)	11 / 15 (20)	11 / 15 (20)	11 / 15 (20)	11 / 15 (20)
Max. speed	rpm	4,200	4,200	4,200	4,200	4,200
Indexing of C-axis	degree	—	—	0.001°	0.001°	0.001°
SUB SPINDLE						
Spindle nose / Hydraulic chuck	type / inch	—	A2-5 / 6	—	A2-5 / 6	A2-5 / 6
Spindle motor	kW (HP)	—	5.5 / 7.5 (10)	—	5.5 / 7.5 (10)	5.5 / 7.5 (10)
Max. speed	rpm	—	5,000	—	5,000	5,000
TURRET						
Turret type / Nos.	type	Hydraulic / 10-Station	Servo / 12-Station	Servo / 12-Station	Servo / 12-Station	Servo / 12-Station
O.D. / I. D.	mm	□25 / Ø40	□25 / Ø40	□25 / Ø40 (BMT-55)	□25 / Ø40 (BMT-55)	□25 / Ø40 (BMT-55)
Max. tool speed	rpm	—	—	5,000	5,000	5,000
TAILSTOCK						
Quill diameter	mm (in)	Ø80 (3.1")	—	Ø80 (3.1")	—	—
Quill travel	mm (in)	120 (4.7")	—	120 (4.7")	—	—
Quill taper	type	MT-#4	—	MT-#4	—	—
OTHER						
Floor plan	mm (in)	3,839 x 1,950 x 1,785 (151" x 76" x 70")	4,254 x 2,256 x 1,842 (167" x 88" x 72")	3,839 x 1,950 x 1,785 (151" x 76" x 70")	4,254 x 2,256 x 1,842 (167" x 88" x 72")	4,254 x 2,141 x 2,381 (167" x 86" x 93")
Machine weight	kg (lb)	4,200 (9,259)	4,750 (10,471)	4,200 (9,259)	4,750 (10,471)	4,700 (10,361)
Power capacity	KVA	20	25	25	25	30

• Machine specifications and design are subject to change without prior notice due to on-going innovation.

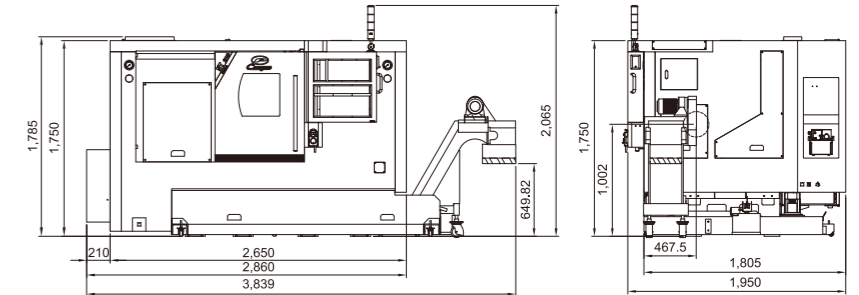
Standard accessories

- 3-jaw power chuck
- Hard jaw: 1 set
- Soft jaw: 3 set
- Hydraulic unit
- Manual tailstock (NT-208 / NT-208M only)
- Chain type chip conveyor
- Coolant system
- Coolant pump
- Pretensioned ballscrew
- Hand wheel (MPG)
- Heat exchanger
- Oil skimmer
- 3-color signal light
- Working lamp

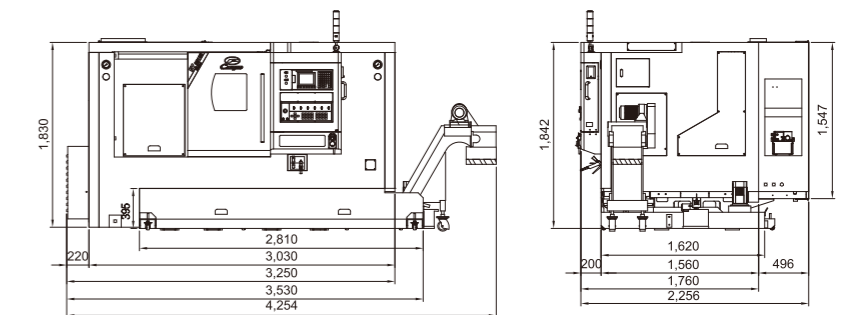
Machine Dimension

Unit: mm

NT-208 / NT-208M



NT-208S / NT-208SM



NT-208SY

