



# 油(液)壓泵浦 Hydraulic Pump



# Quality Devo

## 『創新·品質·服務』 —— 巨輪興的承諾與堅持

1978年，本公司以巨輪企業行之商號創立於高雄縣橋頭鄉，主要營運項目為油壓千斤頂及各類油壓手工具的開發、生產、銷售及維修服務。創業以來，始終堅持以『研發為基石、品質即命脈、服務為根本』的理念，提供客戶性能優異的產品及完善的專業服務，20餘年來深獲國內外業界的肯定與信任。

為落實企業永續經營的願景，公司在全體同仁長期努力與客戶的熱情支持下，終於在2000年新世紀來臨之際，完成新廠落成遷入啟用及擴大公司組織，同時以全新的企業體制—巨輪興有限公司，持續為滿足客戶需求而努力。

本著創業初衷之熱忱和經歷千錘百鍊的豐富經驗，在不斷改善製造流程，嚴格監控每一生產環節中，巨輪興有限公司將以國際品質的實力，伴隨客戶共創未來。

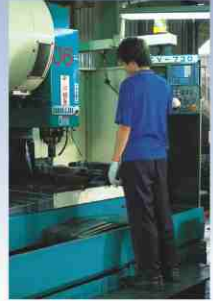
In 1978, our company was established with the name – Chu Lun Co. in Chiao Tou Hsiang. The scope of supply is inclusive of the R&D, manufacturing, sales business and after-service of the hydraulic jacks and the versatile hydraulic hand tools. Sticking to the philosophy of “R&D as foundation, quality as lifeline and service as basis”, we provides the clients with the most outstanding products and comprehensive after-service system. Over 20 years effort and development, we have gained the trust and credibility from domestic and international industries.

To reach the vision of long-term operation goal, we have setup a newly expansion plant and enlarged the organization structure under the staff's hard work and the clients' strong support in the threshold of year 2000. The overall revolutionized operation under the new brand name – CHU LUN SING CO. LTD. We will do everything satisfy to our customers continuously.

Chu Lun Sing's ultimate goal is to invite our clients together to create the new future and to present the internationalized recognized products by his tenacity, abundant experiences, continuing improvements on manufacturing progress and stringent quality control system.



# Service Development





巨輪興對於所做的每個環節都給予品質上的承諾：從原料的購入乃至客戶的售後服務，並且通過ISO9001:2015國際認證。

ISO9001:2015要求承諾管理、執行、產品研發、生產及持續改進的一系列標準化，此認證標準即證明巨輪興已執行並維持記錄自工廠至客戶，包含檢測、處理、訓練等所有文件。

ISO9001要求定期內部和外部稽核以確認所有足以影響品質控制的因素得以監控，這些都是無論過去或未來我們對客戶的保證。

**SUN RUN's** promise to quality is evident in everything we do, from raw material receipt to how we support our customers years after they purchase our goods.

We are registered to ISO9001:2015 international quality standard. ISO 9001:2015 requires compliance with standards for management, administration, product development, manufacturing and continual improvement.

Our registration verifies that SUN RUN has adopted and maintains documentation for processes ranging from factory to customers, inspection, handling, and training. ISO 9001 also requires periodic internal and external audits to ensure all aspects of work affecting quality control are monitored.

This always has been, and will continue to be. That's our guarantee to you.

巨輪興油壓缸符合美國機械工程協會(American Society of Mechanical Engineers) ASME B30.1標準：

1.於典型材料降服強度下，油壓缸有至少2:1的安全係數：

2.油壓缸設計為：

- A.於額定荷重110%時，全揚程操作10次以上
- B.於額定荷重150%時，以90%揚程操作3次，操作完成後再以額定荷重100%及全揚程狀況下檢視其功能是否正常：  
是否有漏油情況

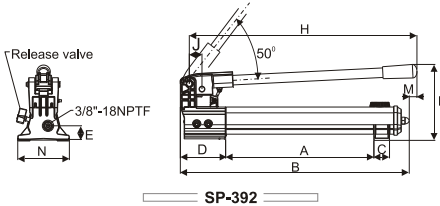
**SUN RUN** hydraulic cylinder almost with the criteria set forth in the American Society of Mechanical Engineers standard ASME B30.1：

- 1. Cylinder are designed to have minimum of a 2-to-1 safety factor on typical material yield strength; and/or
- 2. Cylinder design is
  - A. operated through a minimum of 10 cycles of full travel at 110% of rated load, and
  - B. Pressurized 3 times at 150% of pressure with the cylinder extended to approximately 90% of full stroke, after which the cylinder must be functional at rated load for full stroke and free of leaks.

	<p><b>SPE-3000</b> 電動油壓泵浦 0.5hp Electric Pump</p>  <p>63</p>		
	<p><b>SP</b> 手動泵浦 雙速美規 Two speed, Light Wt. Hand Pump</p>  <p>53</p>	<p><b>SPE-554TQJ</b> 電動油壓泵浦 1.13hp Electric Pump</p>  <p>64</p>	
	<p><b>SPHA</b> 鋁製手動泵浦 Aluminum Hand Pump</p>  <p>54</p>	<p><b>SPE-2</b> <b>SPE-5</b> 電動油壓泵浦 2hp/5hp Electric Pump</p>  <p>65-66</p>	
	<p><b>SPH</b> 手動泵浦 Two speed, Steel Hand Pump</p>  <p>55-56</p>	<p><b>SPEGM</b> 油壓引擎泵浦 Gasoline Pump</p>  <p>67</p>	
	<p><b>SPHW</b> 手動水壓/油壓泵浦 Two speed, water/hydraulic Hand Pump</p>  <p>57</p>		
	<p><b>SPHP</b> 手動油壓泵浦頭 Special Application Hand Pump</p>  <p>58</p>		
	<p><b>SPA-6</b> <b>SPA-70</b> 氣動泵浦 Air Pump</p>  <p>59-60</p>	<p><b>SPA-130</b> <b>SPA-554TQJ</b> 氣動油壓泵浦 Air Pump</p>  <p>61-62</p>	

## SP-392 雙速、輕量型手動泵浦

- 內建洩壓閥防止超荷使用。
- 鍍鋼材質油箱及鋁合金油泵座，輕便耐用。
- 採用雙速操作手柄揚程較單速操作減少78%。
- 省力手柄設計。
- 手柄勾鎖設計、質輕易攜帶。
- 絕緣把手維護使用者安全。



SP-392

## Light Weight, Two-speed Hand Pump

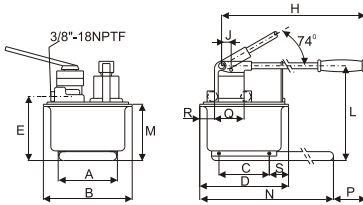
- ※ Internal pressure relief valve for overload protection.
- ※ Durable glass-filled nylon reservoir and nylon encapsulated aluminum pump base for maximum corrosion resistance.
- ※ Two speed operation reduces handle strokes by as much as 78% over single speed pumps.
- ※ Lower handle effort to minimize operator fatigue.
- ※ Handle lock and lightweight construction for easy carrying.
- ※ Non-conductive fiberglass handle for operator safety.



SP-392

## SP-46 雙速、鋼製手動泵浦

- 內建洩壓閥防止超荷使用。
- SP-464安裝4口方向閥適於操作雙動油壓缸。
- 大型油箱適用於較大油量油壓缸或液壓工具。



SP-462 / SP-464

## Steel, Two-speed Hand Pump

- ※ Internal pressure relief valve for overload protection.
- ※ 4-Way valving on the SP-464 for operation of double-acting cylinder.
- ※ Large oil capacity to power a wide range of cylinders or tools.



SP-462

型號 Model Number	泵浦類型 Pump Type	有效油量 Usable Oil Capacity  (cm <sup>3</sup> )	輸出壓力 Pressure Rating		輸出油量 Oil Displacement per Stroke		最大施力 Max. Handle Effort  (kg)	行程 Piston Stroke  (mm)	外型尺寸 Dimensions(mm)		
			1 <sup>st</sup> stage	2 <sup>nd</sup> stage	1 <sup>st</sup> stage	2 <sup>nd</sup> stage			A	B	C
			(bar)		(cm <sup>3</sup> )						
SP-392	雙速	901	13	700	11.26	2.47	42.2	25.4	344	533	36
SP-462	Two-Speed	7423	14	700	126.20	4.75	50.0	38.1	210	308	163
SP-464		7423	14	700	126.20	4.75	50.0	38.1	210	308	163

型號 Model Number	外型尺寸 Dimensions(mm)											重量 Weight  (kg)
	D	E	H	J	L	M	N	P	Q	R	S	
SP-392	99	33	522	30	177	16	120	—	—	—	—	4.1
SP-462	320	195	671	25	270	175	650	92	—	—	80	27.7
SP-464	320	195	671	25	270	175	650	92	89	68	80	27.7

## SPHA 鋁製手動泵浦

- 省力手柄設計。
- 整體鋁合金結構，人體工學淺壓閥旋鈕設計，省力旋轉。
- 強力鋁合金設計，輕巧易攜。

### Aluminum Hand Pump

- ※ SUN RUN's hand pumps are always featured with their rugged construction and low handle efforts.
- ※ All Aluminum Alloy construction and hand size release knobs that with anti-losing mechanism are truly suitable to industrial requirement and your daily work.
- ※ Special design with Aluminum Alloy construction as much light weight is ideally for easy portability and maneuvering.



#### 其他選配說明

假如您需加裝4口方向閥來操作雙動油壓缸，請依下列規範字尾增加編號。

加裝4口方向閥：型號D

案例：

SPHA-1500 選配4口方向閥，訂購型號改為 SPHA-1500D  
相關技術資訊請與SUN RUN取得聯繫

#### Optional Features

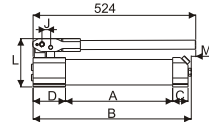
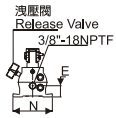
To add optional features to your pump, add the follow suffixes to the end of the model number.

4 ways control Valve : Model D

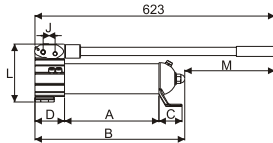
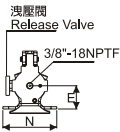
Example :

SPHA-1500 with 4 ways control valve, order: SPHA-1500D.

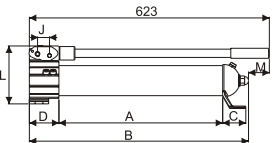
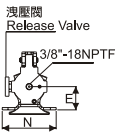
Technical specifications for these features are available from SUN RUN.



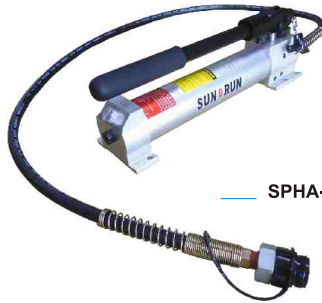
SPHA-500



SPHA-750



SPHA-1500



SPHA-500



SPHA-1500

型號 Model Number	泵浦類型 Pump Type	有效油量 Usable Oil Capacity	輸出壓力 Pressure Rating		輸出油量 Oil Displacement per Stroke		行程 Piston Stroke	外型尺寸 Dimensions(mm)									重量 (含油) Wt. (include oil) (kg)
			1 <sup>st</sup> stage	2 <sup>nd</sup> stage	1 <sup>st</sup> stage	2 <sup>nd</sup> stage		A	B	C	D	E	J	L	M	N	
SPHA-500	雙速	500	14	700	6.28	1.57	20	377	503	38	80.1	27.7	22	119.4	21	97.5	4.5
SPHA-750	Two-Speed	750	14	700	12.5	2.8	21	245	389	60	76.7	60.3	31	150.3	234	140	5.6
SPHA-1500	Speed	1500	14	700	12.5	2.8	21	425	568	60	76.7	60.3	31	150.3	54	140	5.0

## SPH 鋼製手動泵浦

- 內含安全閥設計避免超壓引起損壞。
- 油箱容量大，適用範圍廣泛。
- 雙速操作、自動切換、省力有效率。
- 絕緣把手維護使用者安全。



### Steel Hand Pump

- ※ Internal pressure relief valve for overload protection.
- ※ Large oil capacity, suitable for wide application.
- ※ Two speed auto-switch reduces manpower and increase efficiency.
- ※ Non-conductive fiberglass handle for operator safety.

### 其他選配說明

假如您需加裝4口方向閥來操作雙動油缸，請依下列規範字尾增加編號。

加裝4口方向閥：型號D

案例：

SPH-2000 選配4口方向閥，訂購型號改為 SPH-2000D  
相關技術實詢請與SUN RUN取得聯繫。

### Optional Features

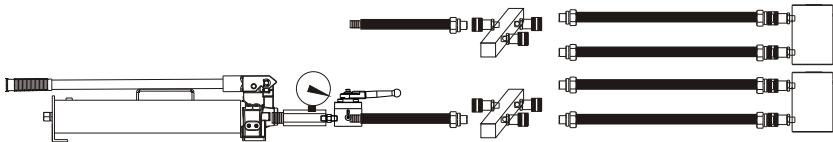
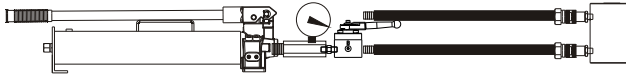
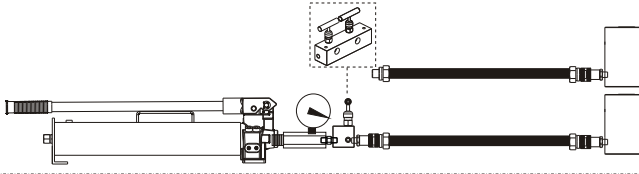
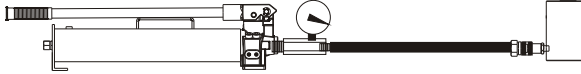
To add optional features to your pump, add the follow suffixes to the end of the model number.

4 ways control Valve : Model D

Example :

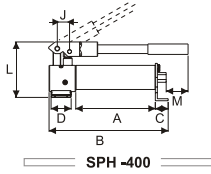
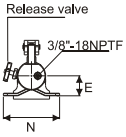
SPH-2000 with 4 ways control valve, order: SPH-2000D. Technical specifications for these features are available from SUN RUN.

## 手動泵浦簡易組合介紹 Pump and Cylinder Sets



型號 Model Number	泵浦類型 Pump Type	有效油量 Usable Oil Capacity  (cm <sup>3</sup> )	輸出壓力 Pressure Rating		輸出油量 Oil Displacement per Stroke		行程 Piston Stroke  (mm)	最大施力 Max. Handle Effort  (kg)
			1 <sup>st</sup> stage	2 <sup>nd</sup> stage	1 <sup>st</sup> stage	2 <sup>nd</sup> stage		
			(bar)		(cm <sup>3</sup> )			
SPH-400	單速 S/S	400	—	700	—	1.25	22	57.7
SPH-900	雙速 Two- Speed	900	14	700	12.5	2.8	21	47.3
SPH-1200		1200	14	700	12.5	2.8	19	46.3
SPH-2000		2200	14	700	14.5	2.8	21	41.0
SPH-3000		3000	14	700	14.5	2.8	21	46.3

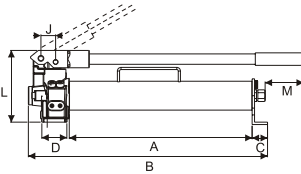
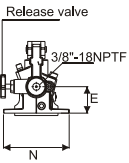




SPH-400



SPH-400

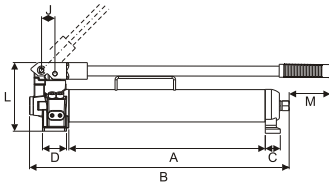
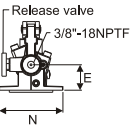


SPH-900

SPH-2000



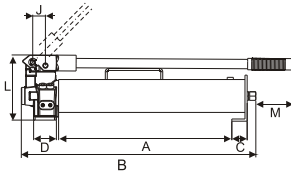
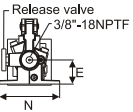
SPH-900



SPH-1200



SPH-1200

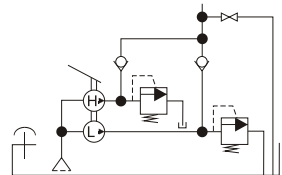


SPH-3000



SPH-3000

型號 Model Number	外型尺寸 Dimensions(mm)									重量 (含油) Wt. (include oil) (kg)
	A	B	C	D	E	J	L	M	N	
SPH-400	190	292	34.0	50	50	31	139	57	140	5.0
SPH-900	395	514	34.0	45	55	31	150	67	136	7.5
SPH-1200	425	536	32.5	48	55	29	150	65	137	9.0
SPH-2000	425	536	32.5	45	55	29	150	60	136	10.5
SPH-3000	425	562	45.0	48	55	29	150	65	137	13.6

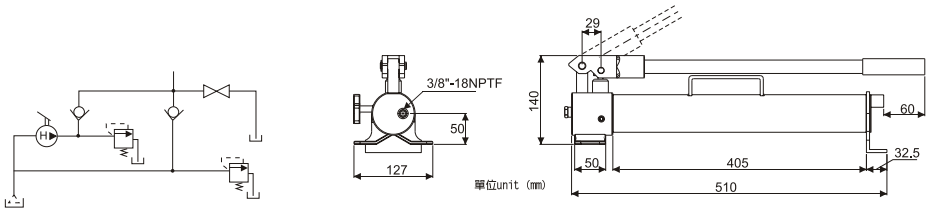


## SPHW 手動水壓/油壓泵浦

- 手動操作泵浦，操作液體可為“水”，壓力可達700bar。
- 不銹鋼材質及特殊防鏽處理。
- 亦可操作油液為媒介。
- 如同其他經過長時間測試的700bar系列泵浦：安全無虞。
- 高-低壓自動切換泵浦：增加工作效率。

### Water/ Hydraulic Manual Pump

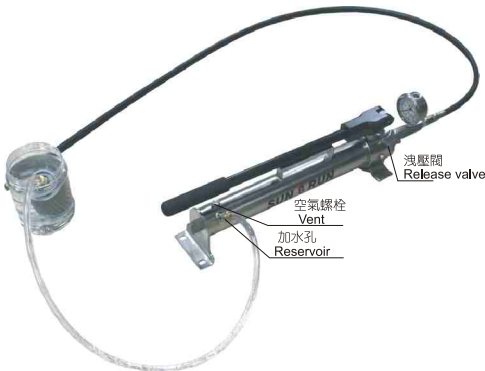
- ※ Manual pump whose hydraulic fluid is “water” and can increase the pressure up to 700bar.
- ※ Special rust-proof treatment is performed to the stainless-steel materials or special steel where the pump contacts water.
- ※ Can be used in a place where the usage of oil is hesitated.
- ※ A safe mechanism incorporating a safety valve like other time-tested 700 bar series.
- ※ Automatic high-low pressure switching pump for improved work efficiency.



型號 Model Number	輸出壓力 Pressure Rating (psi)/(bar)	流量 Output flow rate (c.c/stroke)	水箱容量 Water capacity (c.c)	重量(無水) Weight (No water) (kg)
SPHW-900	10,000(700)	2.3	900	5.7

### 基礎安裝

Basic system set-up



### 客製案例

Special order

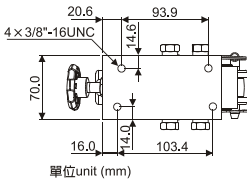
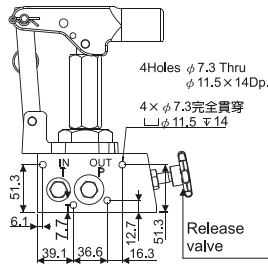
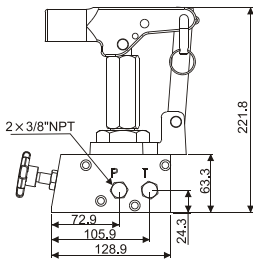


## SPHP 手動油壓泵浦頭

- 可調式連結設計，可減少施力。
- 萬向泵浦頭便於安裝。
- 多款操作壓力可供選擇。
- 適用於空間限制或做為低壓高流量的備用手動油壓動力單元。
- 亦適用於當泵浦油箱需更換時。
- 把手材質為鋁合金，其長度  $\varnothing 22 \times 600\text{mm}$ 。

### Special Application Pump Head

- ※ Adjustable linkage for reduced handle force.
- ※ Swivel pump head for flexible fixturing.
- ※ Wide range of operating pressures to select from.
- ※ Design for tight mounting space, backup manual power or lower pressure and high flows.
- ※ Design for applications when pumps oil tank need to be changed.
- ※ SPHP and SPHH handle construct by Aluminum Alloy which dimension be  $\varnothing 22 \times 600\text{mm}$ .

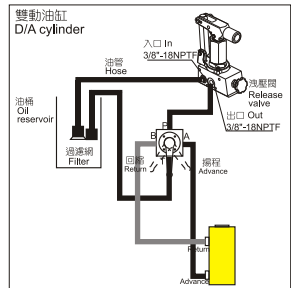
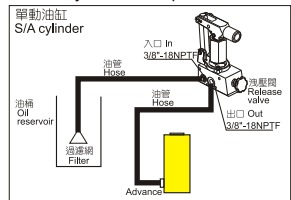


單位unit (mm)

型號 Model No.	輸出壓力 Pressure Rating (psi)/(bar)	流量 Volume (c.c/stroke)	最大施力 Max. Handle Eff. (kgf)	重量 Weight (kg)
SPHP-50	750(50)	75	36	5
SPHP-70	1,000(70)	35	48	5
SPHP-210	3,000(210)	22	54	4
SPHP-450	6,500(450)	9	54	4
SPHP-700	10,000(700)	5	54	4

### 基礎安裝

#### Basic system set-up



# SPA-6 SERIES

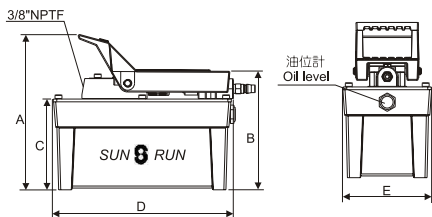
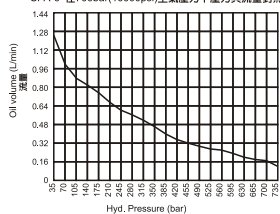
## SPA-6 氣動泵浦

- 內建釋放壓閥保護油路組件，空氣過濾器保護馬達。
- 鋁合金設計輕便高效率。
- 非拋棄式馬達經久耐用，減少維修成本。
- 永久性油箱蓋。
- 三位踏板控制液壓缸前進、持壓及回復操作。
- 已安裝空氣接頭，方便操作。
- SPA-6全系列於700bar壓力時噪音值為dBA 85，噪音低，適用範圍廣泛。



SPA-6 Pressure vs volume based on 700bar(10000psi) air pressure

SPA-6 在700bar(10000psi)空氣壓力下壓力與流量對照



## Air Hydraulic Pumps

- ※Internal relief valve protects circuit components, air inlet filter protects motor.
- ※High pressure output, light weight by Aluminum Alloy reservoir.
- ※Serviceable pump motor is not a "throw away", providing economical repair.
- ※Permanently vented reservoir cap.
- ※Three-position treadle provides cylinder advance, hold and retract operation.
- ※Equipped with air coupler, easy for using.
- ※dBA 85 at 700bar for all SPA-6 pumps, lower noise.



SPA-6D



SPA-6D-8L

### 其他選配說明

假如您需加裝4口方向閥來操作雙動油壓缸，請依下列規範字尾增加編號。

加裝4口方向閥：型號D

案例：

SPA-6 選配4口方向閥，訂購型號改為 SPA-6D  
相關技術資料請與SUN RUN取得聯繫。

### Optional Features

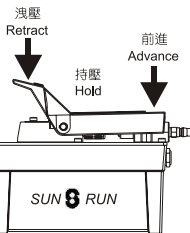
To add optional features to your pump, add the follow suffixes to the end of the model number.

4 ways control Valve : Model D

Example :

SPA-6 with 4 ways control valve, order: SPA-6D.

Technical specifications for these features are available from SUN RUN.



型號 Model Number	有效儲油量 Usable Oil Capacity	輸出壓力 Pressure Rating		使用空壓 Air Pressure Range	輸出油量 Output Flow Rate (noload)		外型尺寸 Dimensions (mm)						重量 (含油) W.t (include oil)			
		(L)	(bar)		(psi)	(kgf/cm <sup>2</sup> )	(L/min)		A	B	C	D		E	F	G
			0 bar		700bar											
SPA-6	1.8	700	10,000	6-10	1.2	0.16	225	171	131	260	128	228	102	8.2		

## SPA 氣動泵浦

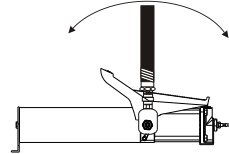
- 增壓效果大，故障率低。
- 鋁合金設計輕便高效率。
- 噪音低，適用範圍廣泛。
- 多重過濾減低污染損壞。
- 旋轉接頭便於連接液壓工具及操作。
- 三位踏板控制液壓缸前進、持壓及回復操作。
- 已安裝空氣接頭，方便操作。

## Air Hydraulic Pumps

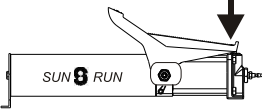
- ※ High efficiency in pressure buildup, low breakdown.
- ※ High pressure output, light weight by aluminum Alloy design.
- ※ Extensive use for customers and lower noise.
- ※ Multi-filters reduce contamination and damage.
- ※ Swivel coupling simplifies hydraulic connection and pump operation.
- ※ Three-position treadle provides cylinder advance, hold and retract operation.
- ※ Equipped with air coupler, easy for using.



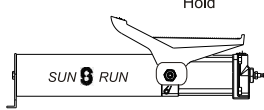
旋轉接頭，便於連接  
Swivel coupling



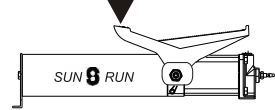
前進  
Advance



持壓  
Hold



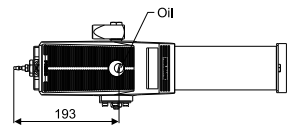
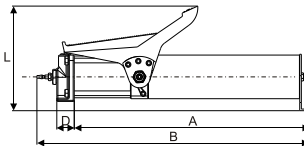
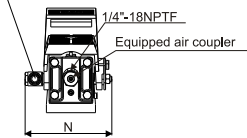
洩壓  
Retract



Hydraulic Output  
3/8"-18NPTF

1/4"-18NPTF

Equipped air coupler



型號 Model Number	適用油壓缸 Used with Cylinder	儲油量 Usable Oil Capacity (c.c.)	輸出壓力 Pressure Rating		使用空壓 Air Pressure Range (kgf/cm <sup>2</sup> )	輸出油量 (無荷重) Output Flow Rate (noload) (c.c./min)	外型尺寸 Dimensions(mm)					壓縮比 Compression Ratio	重量 (含油) W.t (include oil) (kg)
			(bar)	(psi)			A	B	D	L	N		
SPA-70F	單動 Single Acting	800	700	10,000	6-10	450	432	500	32	192	159	1:100	7
SPA-70FL	單動 Single Acting	1200	700	10,000	6-10	450	542	610	32	192	159	1:100	7.5

## SPAT

單提氣動泵  
Portable Air Pump



## SPAQ

框架型氣動泵  
Frame Air Pump



## SPAW

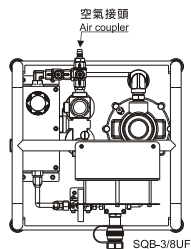
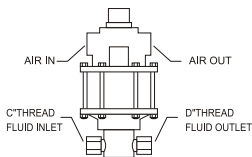
試水泵  
Hydrostatic Pump



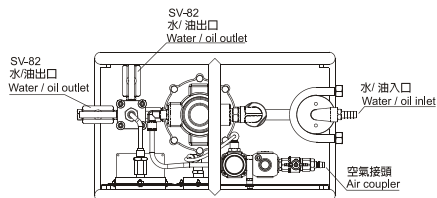
框架型 Steel frame      標準型 Standard type

- 不銹鋼底座及框架。
- 便於提攜。
- ※Steel base and frame.
- ※Easy to carry.

- 具三點組合、濾水調壓、自動潤滑、洩壓閥。
- 具進水過濾器，過濾雜質保護機體。
- 不銹鋼底座。
- 液體可為水或液壓油。
- ※Air units (F.R.L.Unit) provide filter - regulator and lubricate
- ※Input water filter which provide protect.
- ※Steel base.
- ※Liquid can be oil or water.

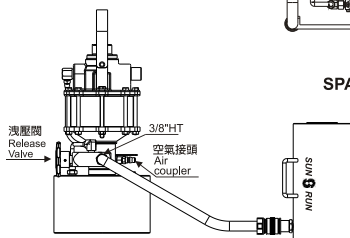


SPAQ-130-700



SPAW-130-300F

SPAW-130-700F



SPAT-130-700

說明 Description	型號 Model Number	壓縮比 Compress Ratio	出油量 Output oil (cm <sup>3</sup> /per stroke)	工作壓力 Work press. (bar)	使用空壓 Air press. (kgf/cm <sup>2</sup> )	儲油量 Equipped reservoir (c.c)	重量 Weight (kg)	外型尺寸 Dimensions (mm)		
								C	D	(mm)
單提型 Portable	SPAT-130-700	1:150	3.1	700	5-7	2000	17.7	—	1/2"PT-14	ø220x420L
單提型 Portable	SPAT-130-700-4K	1:150	2.5	700	5-7	4000	12	—	1/2"PT-14	ø220x530L
不銹鋼框架 Stainless Frame	SPAQ-130-700F	1:150	2.5	700	5-7	5600	25	1/4PT-19	9/16-18UNF	400*400*420
不銹鋼框架 Stainless Frame	SPAQ-180-700F	1:117	12.7	700	5-7	5600	28	1/4PT-19	9/16-18UNF	500*500*520
標準型 Standard type	SPAW-130-300L	1:60	6.4	300	5-7	—	15.7	1/4PT-19	9/16-18UNF	650*300*300
不銹鋼框架 Stainless Frame	SPAW-130-300F	1:60	6.4	300	5-7	—	18.0	1/4PT-19	9/16-18UNF	500*300*420
不銹鋼框架 Stainless Frame	SPAW-130-700F	1:150	2.5	700	5-7	—	18.0	1/4PT-19	9/16-18UNF	

※ 油箱可以需求訂製  
※ Reservoir will be changed by user.

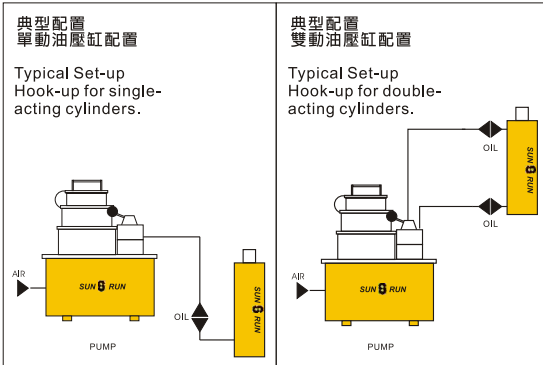
※ 重量及外型尺寸依油箱改變  
※ Weight and dimension will be changed by reservoir alter.

## SPA-554TQJ 氣動油壓泵浦

- 兩段式高效能泵浦。
- 空氣驅動壓力3~8bar。
- 最大輸出壓力：700bar。
- 外部調壓。
- 4hp強力馬達。
- 內建式回油釋放閥保護油壓工件。
- 適用於各種液壓舉升工具。
- 不銹鋼框架便於提運。

### Hydraulic Air Pump

- ※ 2-speed pump drives single- or double-acting cylinders, delivering a high volume of oil.
- ※ Air is the preferred source of power which supply require 3~8bar.
- ※ Max. Pressure : 700bar.
- ※ External adjustable pressure regulator
- ※ Powerful 4 hp motor starts under load.
- ※ Retract side internal relief valve protects tool.
- ※ Just use with Hydraulic lift applications.
- ※ Stainless frame easy to carry.

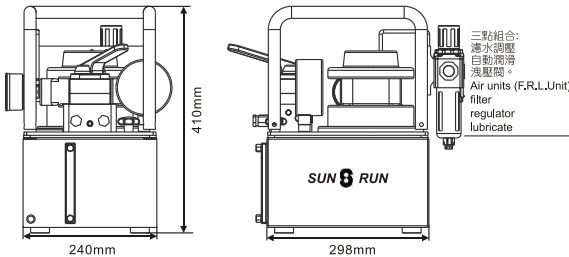


### 選配 Pressure Gauge



G=充油式壓力錶  
Pressure Gauge

	適用油壓缸 Used with cylinder		閥作用 Valve Function	
<b>泵浦基本閥型</b> BASIC PUMP VALVE				
手動三口方向閥 Manual 3 way Valve	●		●	●
手動四口方向閥 Manual 4 way Valve		●	●	●



型號 Model Number	泵浦速度 Pump Type	噪音值 dBA at Idle and 700bar	馬達 Motor kW (hp)	適用油壓缸 Used with cyl.	流量 Flow rate				油箱 Oil tank (L)	重量 Weight (with oil) (kg)
					0 (bar)	50 (bar)	350 (bar)	700 (bar)		
SPA-554TQJ	雙速 TWO-Speed	85/90	2.2 (4)	單動或雙動 Single- and Double Acting	12.0	7.1	2.0	0.9	8	27.5

# SPE-3000 SERIES

## SPE-3000

- 省電易攜帶，操作簡便。
- 適用各類型操作場合。
- 捉把與外殼一體成型。
- 均附有10呎線控裝置。
- 碳刷馬達，頻繁啟動耐操。

## 電動油壓泵浦 Hydraulic Electric Pump

- ※ Requires less energy, simple and easy to operate.
- ※ Suitable for any industrial application.
- ※ Handle and casing built together.
- ※ Equipped with 10ft remote line.
- ※ Carbon brush motor, working frequently.

## SPE-3000 Series

Reservoir Capacity:  
**3000-6000c.c**

Flow at rated pressure:  
**4-0.4 L**

Motor Size:  
**0.37kW(0.5 hp)**

Maximum Operating Pressure:  
**700 bar**

電泵型號選擇：Custom build your Electric Pump:

**SPE-3000** A 1 1 5 1 LT PB G

### 1. 閥門樣式

- A. 常開內建三口二位電磁閥：前進 保持 回復  
B. 常閉線控自動洩壓：前進 回復  
(馬達停止即洩壓 適用於衝床(打孔機)、壓樑機  
或切削時使用)  
C. 手動三口二位控制閥：前進 保持 手動回復  
D. 手動四口三位控制閥：前進 保持 手動回復

### 2. 電壓/安培

- 1=115V/7.5A  
2=230V/2.8A

### 3. Hz

- 5=50/60Hz

### 4. 相數

- 1=1ph

### 5. 油箱

- 無字樣=3000c.c PU 油箱  
LT=8000c.c 鐵製油箱  
★ 亦可依客戶訂製

### 6. 配件

- PJ=壓力調整開關  
PB=外部調壓閥  
G=壓力錶

### 1. Valve

- A. 3way/ 2position built-in Solenoid Valve :  
Advance Hold Return  
B. Remote Release Pressure :  
Advance Return  
(Ideal for punching, crimping and cutting)  
C. 3way/ 2position Manual Valve :  
Advance Hold Manual return  
D. 4way/ 3position Manual Valve :  
Advance Hold Manual return

### 2. Voltage/A

- 1=115V/7.5A  
2=230V/2.8A

### 3. Hz

- 5=50/60Hz

### 4. Phase

- 1=1ph

### 5. Reservoir

- No word=3000c.c PU reservoir  
LT=8000c.c Iron reservoir  
★ User can order suitable reservoir.



SPE-3000C



LT=鐵製油箱  
Iron reservoir



PJ=壓力調整開關  
Pressure Adjuster Switch  
Part No.:SPG-800-CE80



G=充油式壓力錶  
Pressure Gauge



PB=調整開關  
Pressure Adjuster Switch  
Part No.:SPS-7A-700

### 控制閥 Control Valve

單動液壓千斤頂可選用3口2位電磁閥(內建)或手動控制閥。  
建議型號：SPE-3000A(電磁閥)或SPE-3000C(手動閥)

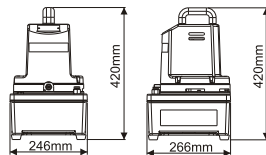
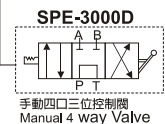
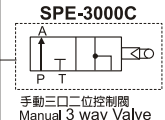
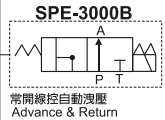
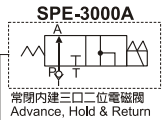
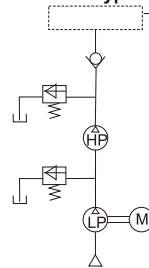
A single-acting cylinder must be powered by a pump with a 3-way solenoid (built-in) or manual valve.

Compare Model : SPE-3000APS (solenoid) or SPE-3000CPS (manual)

雙動液壓千斤頂必須搭配具4口閥門的液壓泵浦。  
建議型號：SPE-3000D

A double-acting cylinder must be powered by a pump with a 4-way valve. Compare Model : SPE-3000D

### 閥門樣式 Valve type



型號 Model Number	馬達 Motor	最大使用壓力 Max. Pressure	輸出壓力 Pressure Rating		輸出油量 Output flow rate		噪音值 dBa at Idle and 700bar	重量 (含油) Weight (include oil)	外型尺寸 Dimension
			(psi)/(bar)	(psi)/(bar)	1 <sup>st</sup> stage	2 <sup>nd</sup> stage			
SPE-3000	0.37(0.5) kW(hp)	10,000(700) (psi)/(bar)	200(14)	10,000(700)	4	0.4	85-90	16	250*270*400 (mm)
SPE-3000 LT	0.37(0.5) kW(hp)	10,000(700) (psi)/(bar)	200(14)	10,000(700)	4	0.4	85-90	24	300*350*460 (mm)



## SPE-554TQJ 電動油壓泵浦

- 外部調壓。
- SPE-554TQ系列：適用於液壓扭力扳手工具(請參考119-121頁)。
- SPE-554TQJ系列：適用於各類液壓舉升工具。
- 3m(10ft)遙控線。

### Hydraulic Torque Wrench Pump

- ※ External adjustable pressure regulator.
- ※ SPE-554TQ series: just use with Hydraulic Torque Wrench(see page119-121).
- ※ SPE-554TQJ series: just use with Hydraulic lift applications.
- ※ 3M(10 ft) remote motor control .
- ※ Stainless frame easy to carry.

## SPE-554TQJ Series

Reservoir Capacity:

8-20L

Flow at rated pressure:

11.3-0.9 L

Motor Size:

0.84kW (1-1/8 hp)

Maximum Operating Pressure:

700 bar



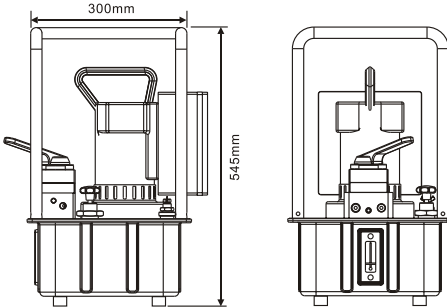
SPE-554TQJ

電泵型號選擇：Custom build your Electric Pump:

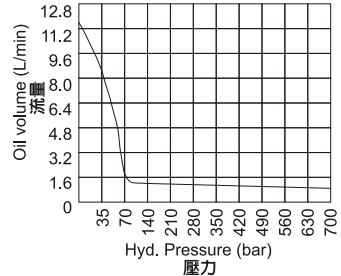
SPE-554TQJ 1 5 1 8 4 WO

0 1 2 3 4 5 6

- |  |  |
|--|--|
| 0.樣式<br>TQ=扭力扳手專用<br>TQJ=一般舉升適用                                      | 0.Type<br>TQ= just use in Torque Wrench<br>TQJ= using in lift applications   |
| 1.電壓<br>1=115V<br>2=230V   | 1.Voltage<br>1=115V<br>2=230V  |
| 2.Hz<br>5=50Hz / 60Hz  | 2.Hz<br>5=50Hz / 60Hz  |
| 3.相數<br>1=1ph  | 3.Phase<br>1=1ph   |
| 4.油箱 (Lx0.26=gal)<br>8=8L(2.1gal)<br>20=20L(5.2gal)<br>★亦可依客戶訂製      | 4.Reservoir (Lx0.26=gal)<br>8=8L(2.1gal)<br>20=20L(5.2gal)<br>★User can order suitable reservoir.                    |
| 5.閥 (僅限TQJ型使用)<br>3=手動三口方向閥<br>4=手動四口方向閥<br>7=三口逆止式電磁閥<br>8=四口逆止式電磁閥 | 5.Valve (just use in TQJ series)<br>3=Manual 3Way<br>4=Manual 4Way<br>7=Check Solenoid 3Way<br>8=Check Solenoid 4Way |
| 6.選配<br>W=輪子<br>O=冷卻系統<br>G=油壓錶                                      | 6.Optional<br>W=Castor wheel<br>O=Cool system<br>G=Pressure Gauge  |



SPE-554 Pressure vs volume  
SPE-554 壓力與流量對照



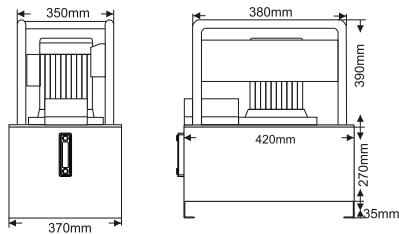
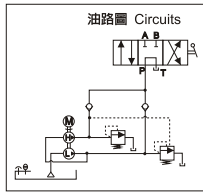
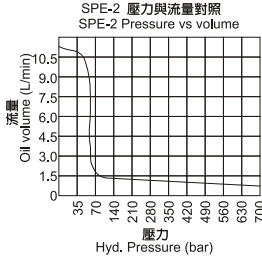
型號 Model Number	轉速 Rpm	噪音值 dBA at Idle and 700bar	馬達 Motor kW (hp)	安培 Amp at 700bar (A)	流量 Flow rate @230VAC(L/min)				油箱 Oil tank (L)	可用 油量 Usable oil (L)	重量 (含油) Weight (with oil) (kg)
					0 (bar)	30 (bar)	350 (bar)	700 (bar)			
SPE-554TQJ	12000	80	0.84 (1-1/8)	25 /110V 10.7 /230V	11.3	7.2	1.2	0.95	8	7	32

## SPE-2 電動油壓泵浦

- 雙速設計減少循環次數；增加效能。
- 易配合客製要求訂製。
- 可外部調壓，出廠已預設壓力上限確保系統超荷使用。
- 附易讀值油位計。
- 全罩式散熱馬達，可適用於戶外操作環境。

### Hydraulic Electric Pump

- ※ Two stage models for reduced cycle times and improved productivity.
- ※ Easy to customize with modular accessory kits.
- ※ User adjustable external relief valve with a factory set upper limit prevents system overload.
- ※ Easy to read integrated oil level sight glass.
- ※ Totally enclosed fan-cooled motors are ideal for outdoor use in many environments.



SPE-2153202

## SPE-2 Series

Reservoir Capacity:  
**20-60L**

Flow at rated pressure:  
**10.5-1 L**

Motor Size:  
**1.5kW (2 hp)**

Maximum Operating Pressure:  
**700 bar**

電泵型號選擇 : Custom build your Electric Pump.

**SPE-2 2 2 6 3 20 3 CW**  
1 2 3 4 5 6 7

- |   |   |
|---|---|
| 1.馬達<br>2=2Hp(1.5kW)  | 1.Motor<br>2=2Hp(1.5kW)   |
| 2.電壓<br>2=230V<br>3=380V  | 2.Voltage<br>2=230V<br>3=380V   |
| 3.Hz<br>5=50Hz<br>6=60Hz  | 3.Hz<br>5=50Hz<br>6=60Hz  |
| 4.相數<br>1=1ph<br>3=3ph  | 4.Phase<br>1=1ph<br>3=3ph   |
| 5.油箱 (Lx0.26=gal)<br>20=20L(5.2gal)<br>40=40L(10.5gal)<br>60=60L(15.8gal)<br>★亦可依客戶訂製 | 5.Reservoir (Lx0.26=gal)<br>20=20L(5.2gal)<br>40=40L(10.5gal)<br>60=60L(15.8gal)<br>★User can order suitable reservoir.           |
| 6.閥<br>3=手動三口方向閥<br>4=手動四口方向閥<br>5=三口電磁閥<br>6=四口電磁閥<br>7=三口逆止式電磁閥<br>8=四口逆止式電磁閥       | 6.Valve<br>3=Manual 3Way<br>4=Manual 4Way<br>5=Solenoid 3way<br>6=Solenoid 4Way<br>7=Check Solenoid 3Way<br>8=Check Solenoid 4Way |
| 7.選配<br>C=線控裝置<br>W=輪子<br>G=壓力錶   | 7.Optional<br>C=Remote control<br>W=Wheel<br>G=Pressure gauge   |

泵浦基本閥型 BASIC PUMP VALVE	適用油壓缸 Used with cylinder		閥作用 Valve Function	
	↑	↓	↑	↓
手動三口方向閥 Manual 3 way Valve	●	●	●	●
手動四口方向閥 Manual 4 way Valve	●	●	●	●

型號 Model Number	馬達 Motor kW (hp)	操作 Operation	輸出壓力 Pressure Rating (bar)		輸出流量 Flow Rate (L/min)		轉速 Rpm	噪音值 dBA at Idle and 700bar	重量 Weight (20L no oil) (kg)
			1" stage	2" stage	1" stage	2" stage			
SPE-2	1.5 (2)	Two-stage 雙速操作	55	700	10.5	1	1725	70-79	55.5

※ 型錄標示重量及尺寸為20L空油箱範例，其他油箱高度及重量依實品略有不同。  
Product weight and reservoir high will be changed by different reservoir, Catalog sample is 20L no oil reservoir.

## SPE-5 電動油壓泵浦

- 多款油箱容量適用於各種油壓缸。
- 所有泵浦均配有堅固框架，適用於各種惡劣操作環境。
- 雙速設計減少循環次數；增加效能。
- 可外部調壓，出廠已預設壓力上限確保系統超荷使用。
- 附易讀油位計。
- 全罩式散熱馬達，可適用於戶外操作環境。

### Hydraulic Electric Pump

- ※ Vary reservoirs for use with a wide range of cylinders and application.
- ※ All pumps feature sturdy Roll Cages for use in tough environments.
- ※ Two stage models for reduced cycle times and improved productivity.
- ※ User adjustable external relief valve with a factory set upper limit prevents system overload.
- ※ Easy to read integrated oil level sight glass.
- ※ Totally enclosed fan-cooled motors are ideal for outdoor use in many environments.

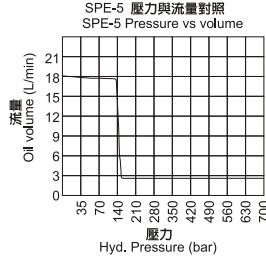
## SPE-5 Series

Reservoir Capacity:  
50-60 L

Flow at rated pressure:  
2.6-18 L

Motor Size:  
3.7 kW(5hp)

Maximum Operating Pressure:  
700 bar

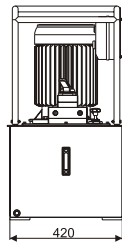
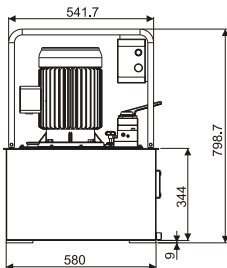
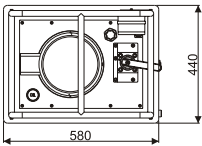
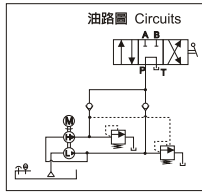


電泵型號選擇 : Custom build your Electric Pump:

**SPE-5 2 6 3 50 4 CW**

1 2 3 4 5 6 7

- |   |   |
|---|---|
| 1.馬達<br>5=5Hp(3.7kW)  | 1.Motor<br>5=5Hp(3.7kW)   |
| 2.電壓<br>2=230V<br>3=380V  | 2.Voltage<br>2=230V<br>3=380V   |
| 3.Hz<br>5=50Hz<br>6=60Hz  | 3.Hz<br>5=50Hz<br>6=60Hz  |
| 4.相數<br>3=3ph   | 4.Phase<br>3=3ph  |
| 5.油箱 (Lx0.26=gal)<br>50=50L(13.2gal)<br>60=60L(15.8gal)                         | 5.Reservoir (Lx0.26=gal)<br>50=50L(13.2gal)<br>60=60L(15.8gal)<br>★ User can order suitable reservoir.                            |
| 6.閥<br>3=手動三口方向閥<br>4=手動四口方向閥<br>5=三口電磁閥<br>6=四口電磁閥<br>7=三口逆止式電磁閥<br>8=四口逆止式電磁閥 | 6.Valve<br>3=Manual 3Way<br>4=Manual 4Way<br>5=Solenoid 3way<br>6=Solenoid 4Way<br>7=Check Solenoid 3Way<br>8=Check Solenoid 4Way |
| 7.選配<br>C=線控裝置<br>W=輪子<br>G=壓力錶   | 7.Optional<br>C=Remote control<br>W=Wheel<br>G=Pressure gauge   |



泵浦基本閥型 BASIC PUMP VALVE	適用油壓缸 Used with cylinder		閥作用 Valve Function		
手動三口方向閥 Manual 3 way Valve	●		●	●	●
手動四口方向閥 Manual 4 way Valve		●	●	●	●

型號 Model Number	馬達 Motor kW (hp)	操作 Operation	輸出壓力 Pressure Rating (bar)		輸出流量 Flow Rate (60Hz) (L/min)		轉速 Rpm	噪音值 dBA at Idle and 700bar	重量 Weight (50L no oil) (kg)
			1 <sup>st</sup> stage	2 <sup>nd</sup> stage	1 <sup>st</sup> stage	2 <sup>nd</sup> stage			
SPE-5	3.7 (5)	雙速操作 Two-stage	60	700	18	2.6	1740	70-79	190

## SPEGM 油壓引擎泵浦

- 多款油箱容量適用於各種油壓缸。
- 所有泵浦均配有堅固框架，適用於各種惡劣操作環境。
- 高分流壓力增加使用效率。

### Hydraulic Gasoline Pump

- ※ Vary reservoirs for use with a wide range of cylinders and application.
- ※ All pumps feature sturdy Roll Cages for use in tough environments.
- ※ High by-pass pressure improve productivity on all model.



## SPEGM Series

Reservoir Capacity:

8 L

Flow at rated pressure:

0.78-5.5 L

Motor Size:

3.2 kW(4hp)

Maximum Operating Pressure:

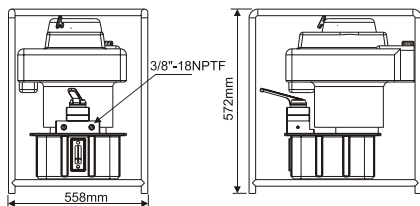
700 bar

泵浦型號選擇 :Custom build your Pump:

**SPEGM- 4 8 4 GW**

1 2 3 4

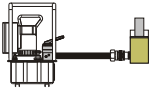
- |  |   |
|--|---|
| 1. 馬達<br>4=4hp(3.2kW)                          | 1.Motor<br>4=4hp(3.2kW)   |
| 2. 油箱 (Lx0.26=gal)<br>8=8L(2.1gal)<br>★亦可依客戶訂製 | 2.Reservoir (Lx0.26=gal)<br>8=8L(2.1gal)<br>★User can order suitable reservoir. |
| 3. 閥<br>3=手動三口方向閥<br>4=手動四口方向閥                 | 3.Valve<br>3=Manual 3Way<br>4=Manual 4Way                                       |
| 4. 選配<br>W=輪子<br>G=壓力錶                         | 4.Optional<br>W=Wheel<br>G=Pressure gauge                                       |



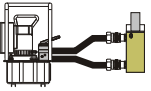
泵浦基本閥型 BASIC PUMP VALVE	適用油壓缸 Used with cylinder		閥作用 Valve Function		
手動三口方向閥 Manual 3 way Valve	●		●	●	●
手動四口方向閥 Manual 4 way Valve		●	●	●	●

型號 Model Number	馬達 Motor Type/ size	輸出流量 Flow Rate		閥作用 Valve Function	噪音值 dBA at Idle and 700bar	重量 Weight (kg)
		1 <sup>st</sup> stage	2 <sup>nd</sup> stage			
SPEGM	Honda-4hp	5.5	0.78	Advance/Hold/ Retract	90	54

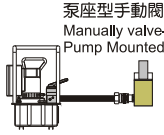
## 控制閥樣式 Control Valve Type



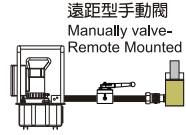
**3口方向閥**  
適用於單動油壓缸  
**3 Way Valve**  
Are used with single-acting cylinder.



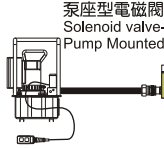
**4口方向閥**  
適用於雙動油壓缸  
**4 Way Valve**  
Are used with double-acting cylinder.



**泵座型手動閥**  
Manually valve-  
Pump Mounted



**遠距型手動閥**  
Manually valve-  
Remote Mounted



**泵座型電磁閥**  
Solenoid valve-  
Pump Mounted

前進&持壓 Advance & Hold		回縮&持壓 或 洩壓 Retract & Hold or Release	
手動時持壓 Manual Hold	電動時持壓 Electric Hold	手動時持壓/ 洩壓 Manual Hold/ Release	電動時持壓/ 洩壓 Electric Hold/ Release
	<p>Press: Advance 持按:前進 Release: Hold 不按:持壓 DOWN (STOP)</p>		<p>Press: Return 持按:回縮 Release: Hold 不按:持壓 DOWN (STOP)</p>
	<p>Press: Advance 持按:前進 Release: Hold 不按:持壓 DOWN (STOP)</p>		<p>Press: Return 持按:回縮 Release: Hold 不按:持壓 DOWN (STOP)</p>

大部份SUN RUN 閥類均符合左列操作。SW-700系列或特製品請參考型錄、操作手冊或連絡SUN RUN。

Most SUN RUN valve will be operated as left instruction. SW-700 series or special valve please check to catalog, manual or connect to SUN RUN.

- : 三通閥有三個油口：壓力口(P)、油箱口(T)、前進口(A)
- 四通閥有四個油口：壓力口(P)、油箱口(T)、前進口(A)、回縮/洩壓口(B)
- 位：閥體的控制點數量。一個二位閥只能控制液壓缸的前進或回縮。要控制油缸維持壓狀態則需一個位置。

### Ways:

3-way valve has 3 ports: pressure (P), tank (T) and advance (A).

4-way valve has 4 ports: pressure (P), tank (T), advance (A) and return (B).

### Positions:

The number of control points a valve can provide. A 2-position valve has the ability to control only the advance or retraction of the cylinder. To be able to control the cylinder with a hold position, the valve requires a 3rd position.

<p>三 口 二 位 3 way 2 position</p>	<p>三 口 三 位 N型：中立回油 最常見的是中立回油型，油缸不動，油泵卸載，油溫小。 3 way 3 position N: Tandem Center The most common is the Tandem Center. Cylinder ports are blocked, oil from pump goes to tank. This provides for minimum heat build-up.</p>		
<p>四 口 二 位 4 way 2 position</p>	<p>四 口 三 位 N型：中立回油 最常見的是中立回油型，油缸不動，油泵卸載，油溫小。 4 way 3 position N: Tandem Center The most common is the Tandem Center. Cylinder ports are blocked, oil from pump goes to tank. This provides for minimum heat build-up.</p>	<p>四 口 三 位 O型：中立不回油 另一個常見的模式是中立不回油型，大多用於多油缸進行獨立控制模式。此類型閥不但使油缸不動作，也阻斷泵的油路循環。需要其他方法使泵卸載而避免油溫升高。 4 way 3 position O: Closed Center The next most common is the Close Center. That is used mostly for independent control of multi-cylinder applications. This configuration again provides for little to no movement of the cylinder, but also dead-heads the pump, isolating it from the circuit. Use of this type of valve may require some means of unloading the pump to prevent heat build-up.</p>	<p>四 口 三 位 H型：中立卸油 當不需持壓時可使用中立卸油型，當使用二個分開的液壓工具時亦適用。例如油壓切斷器和捲揚機。 4 way 3 position H: Open Center Open center used when holding is not a requirement, as when running two separate hydraulic tools such as cutters and crimpers.</p>



## 巨輪興股份有限公司-總公司

### **CHU LUN SING CO.,LTD- Head Office**

82059高雄市岡山區岡山北路199號  
No.199, Gangshan N. Rd., Gangshan Dist.,  
Kaohsiung City 82059, Taiwan  
TEL:886-7-6210505  
FAX:886-7-6217575  
<http://www.sunrun.com.tw>  
e-mail: [sun.run@msa.hinet.net](mailto:sun.run@msa.hinet.net)

Singapore

### **Sun Hydraulics Pte Ltd**

2 Yishun Industrial Street 1 #04-15  
North Point Bizhub Singapore 768159  
TEL : 65-6 841 7833  
FAX : 65-6 844 2231  
<http://www.sunhydraulics.com.sg>  
e-mail: [sales@sunhydraulics.com.sg](mailto:sales@sunhydraulics.com.sg)

Thailand

### **Sun Hydraulics [Thailand] Co., Ltd**

293/14 Soi Ramintra 119 Minburi Bangkok  
10510 Thailand  
TEL : 66-2 540 6631  
FAX : 66-2 540 6632  
<http://www.sunhydraulics.co.th>  
e-mail: [sales@sunhydraulics.co.th](mailto:sales@sunhydraulics.co.th)

India

### **V-tech power hydraulics**

# 5, Roshan House, Plot # 18, Sector # 30  
Opp. Sanpada Railway Station, Sanpada ( West ) ,  
Navi Mumbai - 400 705, Maharashtra, India  
TEL : 91 22 27 75 21 80  
FAX : 91 22 27 75 11 81  
<http://www.vtechhydraulic.com>  
e-mail: [sales@vtechhydraulic.com](mailto:sales@vtechhydraulic.com)

China-Shanghai

### **Chu Lun Sing Machinery [Shanghai] Co., Ltd**

昆山市花橋鎮花安路169號中寰廣場公寓樓1層5室  
Room5, building 169, HuaAn Road, HuaQiao District KunShan City  
TEL : 86- 21 39217246  
FAX : 86-51 236870145  
Mobil : 86- 18001933799  
86- 15821790796  
86- 13671662885

